



Farm Way

£739,945

Cosway are pleased to offer this well presented and extended detached family home is perfectly located within the area of the highly regarded Bushey Meads and Queens Schools. The property benefits from a side extension which is ideal for either a bedroom, office or work space and has a guest W/C and useful utility space. There is a separate kitchen, large lounge/living space, side access and not forgetting the fantastic 14ft conservatory to the side. Upstairs there are three bedrooms, en-suite shower to the master and the family bathroom situated off the landing. Externally, the property boasts off street parking for a number of cars to the front a large rear garden with patio area and single garage.

Viewing

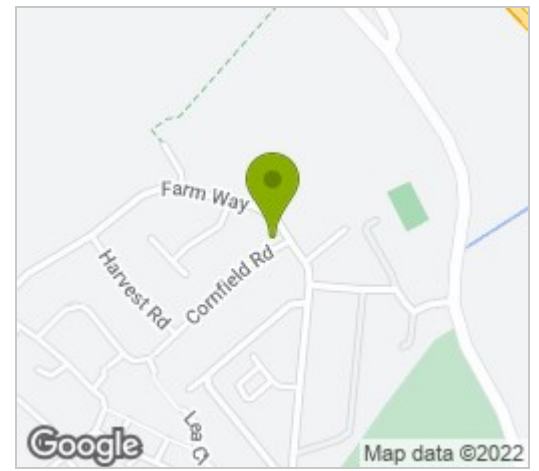
Please contact our Mill Hill Office on 020 8959 0011 if you wish to arrange a viewing appointment for this property or require further information.



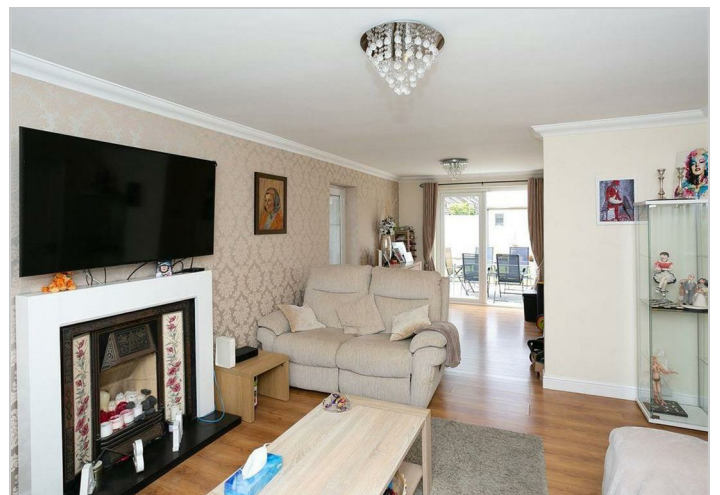
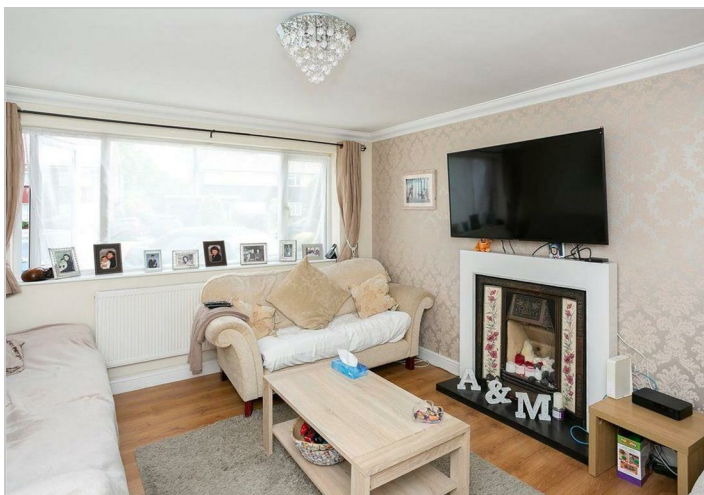
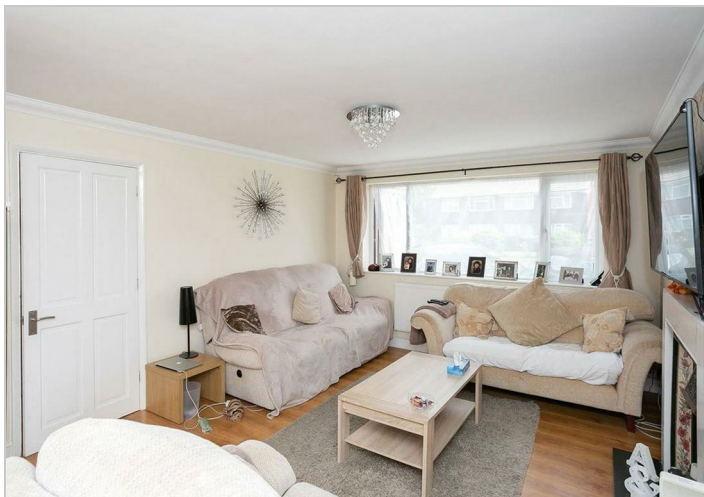
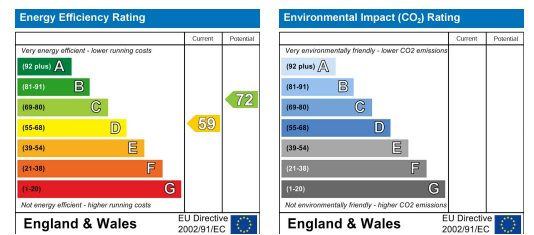
Floor Plan



Area Map



Energy Efficiency Graph



These particulars, whilst believed to be accurate are set out as a general outline only for guidance and do not constitute any part of an offer or contract. Intending purchasers should not rely on them as statements of representation of fact, but must satisfy themselves by inspection or otherwise as to their accuracy. No person in this firm's employment has the authority to make or give any representation or warranty in respect of the property.